

Nowadays people know the price of everything and the value of nothing.

~ Oscar Wilde

*The value of
achievement lies in
the achieving.*

~Albert Einstein

*Knowledge is of no
value unless you put
it into practice.*

~Heber J. Grant

*Price is what you
pay. Value is what
you get.*

~Warren Buffett

Try not to become a man of success.
Rather become a man of value.

-Albert Einstein-





M SERIES

INDUSTRIAL

FORWARD THINKING®



www.dtgdigital.com



Only DTG Digital offers the largest range of printing areas for finished garments or fashion panels

THE RIGHT MACHINE FOR YOUR APPLICATION

BED SIZE - ACCOMMODATES MULTIPLE PLATEN CONFIGURATIONS

Designed to suit most common cut material sizes in fashion products. Heavy duty production to finished garments for greater production through-put.



MAKING CUSTOMERS

successful for over a decade

DTG Digital has made it its mission to help companies with the most diverse range of textile printing equipment become more profitable.

How do we accomplish this?

With innovative inkjet engineering solutions systematically designed to meet the needs of our customers.

There are more than 8,000 machines installed around the world, which is testimony to our expertise and our customer's confidence in us. As the largest manufacturer of textile printing equipment in our category we also have a global network of subsidiaries, distribution and service support centres at our disposal. This guarantees local availability, whether it's pre-sales application tests, on-site installation or service requests. This network also allows us to implement large international customer projects quickly and economically.

M-SERIES INDUSTRIAL

The DTG M-Series range of Direct to Garment Inkjet printers delivers the industries most advanced print platform engineered specifically for textile applications.

Greater resolutions and ink drop technologies are delivered through an entirely new firmware – print a completely new range of products with scalable platens from 2-12 shirts, print all over jeans, hoodies or clothing panels from one printer series! It's entirely flexible, engineered for production, and will grow with you. It's FAST.

The M-Series outputs more without lowering resolutions or print quality – screenprinters, embroiderers, internet shops, photographers, print shops and designers all finally have a solution that's industrial and flexible! It's a different science and the M-Series delivers greater profit opportunities with an entirely new engineering.

The service is unbelievable - I have owned a few machines now and never experienced such good service, and not only good service but a genuine desire to help with problems and grow our business

Peter Hails Illustration and Design






pigment[®].inc

digital... inks and coatings

INKS

At DTG Digital “we know textiles” and the right ink does make all the difference. DTG Digital works in collaboration with Pigmentinc[®] exclusively with the following ink sets:

- DTG.P30i Pigments CMYK & W 
- DTG.P40i Sublimation [12 colors. inc. neon] 
- DTG.P50i Reactives [9 colors] 

Time tested and production proven since late 2004 the DTG pigment ink series have been the powerhouse in textile production. We have expanded of late with a new P30i pigment series to build on the legacy which has given DTG Digital the market edge with superior color. Our new P30i series details:

- Better colors
- Less settling
- Better head conformity
- Better wash and hand
- **White ink to dark poly with stretch**



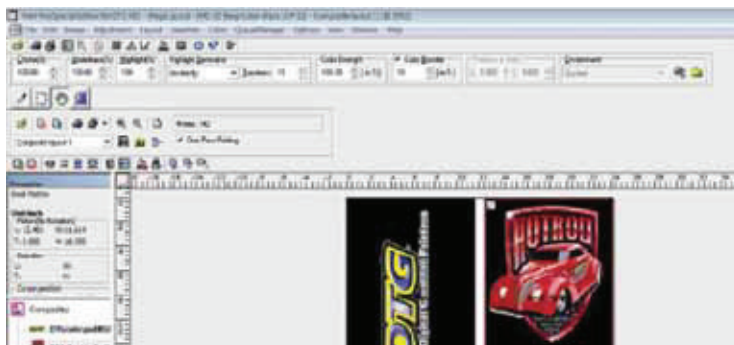
New IQ Color RIP



Print quality and features within a RIP – do make a difference to your overall design – if color and knock out graphics are important to you and your customers, then the new IQ Rip for the Mseries will leave you breathless.

Compatible with most file types – jpg, psd, tiff, png, tga, gif, bmp, pcx, dib. Colors are sharp and accurate – edge definition detail is sharp, user intervention is limited because the new IQrip supports more features for industrial decoration than any other RIP for a DTG application.

White layers are auto generated with complete scalability and creates the perfect undertones for maximum presentation – precise calculation while printing to dark garments – your iQ Rip sees a black shirt as an under base color and corrects accordingly – sharper prints faster whilst using less ink.



WHAT IS YOUR TEXTILE APPLICATION?

Typical Industries

- Fashion panels
- Soft furnishings
- Promotion
- Hi Vis workwear
- Sportswear
- Team wear
- Handicrafts
- Fashion strike off
- Panels
- Internet sales
- Sports Apparel
- Corporate wear
- Fabric signage
- Home furnishings
- Textile displays
- Jeans
- Advertising materials
- Bedding
- Baby clothes
- Sleepwear
- Sampling ...and many more.

Typical Materials	White Ink	Color Ink
Cotton	✓	✓
Cotton blends	✗	✓
Polyester	✗	✓
Poly-Viscose	✗	✓
Rayon	✗	✓
Silk	✓	✓
Wool	✓	✓
Spandex	✗	✓
...and many more		

 **NEW**



WHAT MAKES US DIFFERENT

More features, more output, more color

WIMS... "Don't be fooled – cartridges are there only to lock out consumables. So called "closed loop systems" sound great but add little if anything to ink stability – it's simple 1st grade science – you can not syphon fluid without pressure, nor can you move ink from a cartridge or a bag without air in the system – it's how you manage the air in the inks and the subsequent settling which makes the difference. If you have to shake something to make it work... You really need to re-look at WIMS technology"

**Moishin Tiwana -
Chemical Engineer**

OnePassFast... "Double your production - In early 2009 we pioneered the One Pass process which allows both white and color layers to be seamlessly printed by eliminating the need for two pass white and color layers – perfect for fashion style prints and full photographic images – with the M2 you can increase your output dramatically - 2 shirts in 40 seconds with white ink!!"

**Jerry Erich -
Global products manager**

FEATURES & BENEFITS



With the patent pending White Ink Management System, head clogging and maintenance downtime is reduced considerably. The DTG-WIMS is the final answer to white ink prints.

By re-circulation of ink via a pressurized peristaltic pump system coupled with pressure release filters and dampers your white ink is ready to print when you are. We have reduced the maintenance and downtime currently seen in the industry and the M-Series are the best all-round white ink print systems in the world market today.



Platen Options - scaleable production

The M-Series is 100% flexible with a multitude of TexLoc™ platen options for kids sizes through to super wide prints.

The M-Series bed in standard configuration supports two standard shirts with a unique bridge to allow extra wide prints to a maximum of 610 x 450mm (24" x 17.7").

Big image area options - are available on the M4 and M6 with our unique platen drive swap out mechanism for multiple production up to 8 shirts – need to print full length jeans, towels etc. Image areas 1100 x 2000mm (43" x 78") – you can configure your mseries to your market or grow into new markets and expand your profit options – It's flexible.



DTG One Pass Fast

A uniquely beneficial patent pending process that allows both white base and colors to be printed in just one pass. With the "One Pass Fast" you can offer faster turnarounds with greater speeds and gain much greater control over the color gamuts required to create truly original and fantastic color prints to a whole host of substrates.

"Up to 50% faster prints with exceptional colors and all supported with a unique easy to use RIP."



ACPC (Active Print head Collision Protection)

By incorporating precision culminated light beam detection sensors, anything getting in the way of the print path is automatically detected, and the active drive system will drop the pallet while printing, ensuring that head strikes are drastically reduced while still maintaining your prints.



We're green

Or try as hard as we can to be a responsible corporate company who takes our environment policies seriously. We endorse and partner with suppliers who also adopt similar principles.





Just better Science

The all new iQ Interweave technology is a core development in support of textile decoration. A new science that delivers greater flexibility and quality of print to a wider range of garments. More ink when and where you need it! iQ Interweave prints in a wave pattern, not staggered lines. Wave printing over grids of textiles is far superior.



Positive Damper Feed Pressure

Unlike inkjet ink used for paper printing, textile inks have a higher viscosity and surface tension and struggle with gravity fed ink systems. Consistent ink delivery means less clogging and longer prints are available without the stress for ink replenishment to the nozzle plate. The DTG Digital range uses a pressurized damper on each individual color with 1.2psi of constant pressure for better ink delivery ensuring consistent color accuracy and better reliability.



DTG Training Academy

DTG Digital is the only manufacturer to provide significant after sales support and training globally with over 86 dedicated resellers. The DTG Training Academy is in Australia, Singapore and UK are textile application centres that are in support of educational facilities, supporting young designers.



Lowest Cost per Print

A low cost per print is imperative in most markets. At DTG Digital we have a selection of inks for various applications. We also match quantity to cost per print requirements to help customers win important contracts. Contact your DTG Digital representative to discuss how quantity buy breaks will help your production price constraints.



3 Year 'Heads and All' Warranty

DTG Digital offers a world leading warranty of up to 3 years, An extended warranty delivers peace of mind. All DTG Digital's printers are backed by a standard 12 months warranty [See website for extended warranty options].



DecoNetwork™ Webstores

Why are some online sites booming while others aren't! – Its simply all about affiliate stores, an intuitive online design process and instant SEO marketing. Deconetwork provide invaluable tools for those wanting to cash in on the online garment trading boom by providing over 15,000 webstores designed specifically for online trading. There is a host of features that ensure your web success. More details www.deconetwork.com



Download DTG Designs Value Design

Its one thing having a great website but it needs graphics that people want to buy. DDTGD sources leading street wear graphics from a host of designers globally and are available for download and pre prepared ready for DTG printing. There are over 1000 royalty free street wear designs, perfect for online and retail sales. Populate your web store today.

IQ Interweave... "Lets face it: printing on textiles isn't the same as printing on paper. All current print heads in the market work on the principle of laying ink drops in staggered parallel lines - but textiles are basically fibers in a grid pattern, so we have changed the science to lay down ink drops in a wave pattern across this grid of fiber – increasing saturation and eliminating banding which is common at lower resolutions. It's an all new science"

**Gordon Zerf –
Head of Engineering**

IQ RIP.. "Print quality is essentially the most important reason why DTG Digital has been the benchmark for the garment decoration industry globally - textiles are viewed up close not from a distance like a poster – most DTG machinery options support print heads that simply do not offer a microweave drop picolitre option and struggle to create an adequate or correct waveform for textile decoration. It all comes down to the color and quality of your print that will make the difference."

**Jon Cloake -
Global Tech Support**

M2



DTG M2 INDUSTRIAL

The industrial class DTG M2 is the culmination of 10 years of R&D and garment printer development, it delivers the industries most advanced, user friendly and precise print platform specifically designed for textile applications, whilst retaining the revolutionary WIMS system (white ink management) and One Pass print technology that have made DTG Digital an industry leader.

The M2 series machine is designed with a bespoke firmware specifically created for optimal print quality at higher production speeds by adoption of greater ink droplet control and accurate placement on the garment. Simply put, the M2 outputs more without lowering print quality, it's a better science!

Print all over T-shirts, hoodies, tea towels, mouse mats, bags, jeans, cloth panels and more. The productivity, flexibility and throughput is limited only by your imagination, creating greater profit opportunities for you. The DTG M2, an industry benchmark that will grow with you!

Better engineered, ink management, brighter prints, faster production, more flexibility and easier to use without the maintenance levels currently experienced in the market, that's the DTG M2!



M2 Specifications

	Printhead	Piezo 180 nozzles per channel
	Color	8 (Dual CMYK or 4* White plus CMYK)
	Print Area	604mm x 450mm (24" x 17.7")
	Drive	Processor driven conveyor
	Inks	DTG inks - Piezo compatible pigments
	Ink Delivery	Bottle - pressurised CYMK Bottle - pressurised re-circulation - white (WIMS)
	Operating System	Vista and XPRIP - DTG Rip Pro
	Electrical	AC 110-240V, 50-60Hz, 10A Consumption - 55W or less, Standby - 5W, Off - 1W
	Physical Dimensions	980(W) x 550(H) x 1270(L)mm 38.6"(W) x 21.7"(H) x 50"(L)
	Weight	96kg (212lb) (boxed weight will vary)





Large prints



Multiple prints



Easy maintenance

M2 Quick Facts

- ▶ Industrial all steel build – IT'S TOUGH!
- ▶ Patent Pending WIMS (White Ink Management System)
- ▶ Seamless servo driven accuracy
- ▶ Bespoke firmware designed for textile Printing
- ▶ Scalable production – print multiple garments at a time.
- ▶ A new way to print – iQ Interweave – eliminates banding at all resolutions
- ▶ Print area of 604 x 450mm (24" x 17.7")
- ▶ Print 50+ large graphics on white/lights garments and 25+ large graphics on darks per hour – Now that's FAST!
- ▶ One pass enabled, increase your production output dramatically
- ▶ 46 pcl ink drop size scalable through all resolutions.
- ▶ Intelligent integrated RIP software with patented white under-base tools
- ▶ Consistent repeatable prints, day after day.



M4



DTG M4 INDUSTRIAL

The DTG M4 printer is the ideal production center for high volume print requirements. It boasts the same features as the industry leading M2 but with a far larger and scalable printable field area. The standard configuration of 4 x adult platens allows an operator to adopt a "set and forget" production workflow, effectively maximising output and minimising manpower.

Additional optional bed extensions are available giving a maximum 2000mm printable depth, perfect for high end 100% print coverage fashion panel prints and the like.

The M4 achieves an even greater ROI through increased flexibility and productivity.

Better engineered, ink management, brighter prints, faster production, more flexibility and easier to use without the maintenance levels currently experienced in the market, that's the DTG M4!

M4 Specifications

	Printhead	Piezo 180 nozzles per channel
	Color	8 (Dual CMYK or 4* White plus CMYK)
	Print Area	604mm x 1200mm (24" x 47") expandable to 2000mm deep
	Drive	Processor driven conveyor
	Inks	DTG inks - Piezo compatible pigments
	Ink Delivery	Bottle - pressurised CYMK Bottle - pressurised re-circulation - white (WIMS)
	Operating System	Vista and XP - DTG Rip Pro
	Electrical	AC 110-240V, 50-60Hz, 10A Consumption - 55W or less, Standby - 5W, Off - 1W
	Physical Dimensions	1270L x 980W x 1250H mm (50"L x 38.6"W x 49"H)
	Weight	120kg (264lb) (boxed weight will vary)

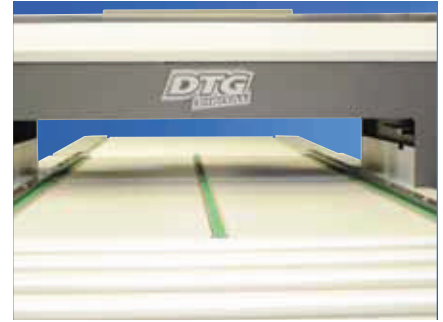




4 to 6 shirt pallet options



Up to 2000mm length prints



Flexible print area

M4 Quick Facts

- ▶ Industrial build – IT'S TOUGH!
- ▶ Patent Pending WIMS (White Ink Management System)
- ▶ Seamless servo driven accuracy
- ▶ Bespoke firmware designed for textile Printing
- ▶ Scalable production – print multiple garments at a time.
- ▶ A new way to print – iQ Interweave – eliminates banding at all resolutions
- ▶ Print area of 604 x 1200mm (24" x 47") expandable up to 604 x 2000mm
- ▶ One pass enabled, increase your production output dramatically
- ▶ 46 pcl ink drop size scalable through all resolutions.
- ▶ Intelligent integrated RIP software with patented white under-base tools
- ▶ Consistent repeatable prints, day after day.



Extension rollers

M6



DTG M6 INDUSTRIAL

The M6 by DTG Digital was designed for multiple garment prints and fashion panel decoration. A dual 4 color ink system supports a wider variety of ink styles for increased textile direct applications with 3 ink solutions developed specifically for flatbed inkjet printing to textiles. Its flexible.

Pigment inks for cotton, viscose, polyester etc with rich colors. Dye sublimation inks for prints directly to polyester stretchable fabric with increased color gamut. Reactive inks for prints to cotton, silks, wool and more with incredible soft hand and vibrancy.

Fashion panel printing is gaining momentum in strike off and small lot manufacturing with fashion houses and contract decorators because of the ease of the flexibility that a flatbed digital printer delivers. There's no need for a roll to roll sticky belt which means a massive reduction in equipment and manpower costs.

The DTG Digital M6 supports common panel sizes up to 1100 x 980mm. Fabrics and cut piece as well as multiple finished garments can be decorated at just under 100square feet per hour with the dual CMYK piezo print head with a minimum 3.5picolitre drop size for incredibly fine detail through to a 48 picolitre large ink drop for rapid production with penetration.



M4 Specifications

	Printhead	Piezo 180 nozzles per channel
	Color	4 color Dual CMYK
	Print Area	1100mm x 980mm
	Drive	Processor driven conveyor
	Inks	DTG inks - 3 types: Pigment, Reactive, Sublimation
	Ink Delivery	Bottle - pressurised CMYK Bottle - pressurised re-circulation - white (WIMS)
	Operating System	Vista and XP - DTG Rip Pro
	Electrical	AC 110-240V, 50-60Hz, 10A Consumption - 55W or less, Standby - 5W, Off - 1W
	Physical Dimensions	1790L x 1550W x 1250H mm (70L x 61W x 49H inches)
	Weight	170kg (375lb) (boxed weight will vary)



1790mm



1250mm

1550mm



6 shirt pallet as standard



Extra large print area



Panels 1080 x 980mm

There's no banding even at lower resolutions as the M6 retains the iQ Interweave technology that has made the DTG printers the first choice for garment printers globally. Pressure release dampers ensure that ink is delivered to the print head nozzle plate for uninterrupted printing and an ink mist extraction fan also spans the entire bed ensuring longer print runs without maintenance. With pressurized high volume ink tanks you can print a full shift without needing to replenish inks.

The DTG M6 is a powerhouse in production that offers flexibility for a wider range of textiles - finished garments or fashion panel prints.

M6 Quick Facts

- ▶ Dual CMYK speed
- ▶ IQ Interweave for less banding
- ▶ Pigment, reactive and sublimation ink compatible
- ▶ Up to 100square feet per hour production
- ▶ 3.5pcl to 48pcl ink drops
- ▶ Bed size 1100 x 980mm
- ▶ Multiple garment production
- ▶ All steel construction
- ▶ Pressurized ink system
- ▶ Up to 2880dpi hi resolution prints
- ▶ 6 standard shirts or 2 ultra large



Ink Coatings/Pre-treats

Undercoat Type A (white cotton/poly)

Pre coat agent that can be applied by aerosol or compressor. For cotton, lycra, polyester etc. Increases vibrancy and wash resistance.

Undercoat Type B (dark poly)

Pre coat agent that can be applied by aerosol or compressor. For white ink textile printing on dyed polyester. For use with P30i white ink only.



Undercoat Type C (dark cotton)

Pre coat agent that can be applied by aerosol or compressor. For white ink textile printing to dark cotton. For use with DTGTEX white ink only.

DTG Trans

Combined with a simple plotter cutter DTG-Trans is perfect for transfer application to vinyl, polyester, PU, canvas, cotton and more.

Foil decoration

A simple foil application allows for stunning new effects allowing you to offer your customers a point of difference. Widely available in most countries, please contact your DTG dealer for further information on foil application.



We do not guarantee print results or adhesion. Trial print tests must be undertaken prior to production and inks must be used in accordance with local government guidelines.



pigment[®].inc

digital... inks and coatings

Ink Guide		
	TEXTILE Pigment	Textile pigment
	TEXTILE Sublimation	Textile sublimation
	TEXTILE Reactive	Textile reactive

Typical Materials	White Ink	Color Ink
Cotton	✓	✓
Cotton blends	✓	✓
Polyester	✓	✓
Poly-Viscose	✓	✓
Rayon	✓	✓
Silk	✓	✓
Wool	✓	✓
Spandex	✓	✓
...and many more		

INKS

At DTG Digital “we know textiles” and the right ink for your application does make all the difference.

We understand that it is imperative for fashion, promotional and production printers to provide great color, wash fastness with a superior hand. We understand that price and performance is critical as well to your ongoing success. And this all starts with superior print head reliability, repeatable colors batch after batch and less maintenance downtime from a better ink with prices matched to your market requirement – the new **Pigmentinc[®] P30i** series simply excels.



Pigmentinc[®] have a history of pioneering ink for well over a decade and the all new P30i series was developed for DTG Digital to do far more when compared to our previous inks. The Pigmentinc[®] P30i series has less white ink settling, typically lower viscosity and surface tensions enabling continual repeatable prints. There's less air in the ink delivery to nozzle plates, so you get more printing without the maintenance levels currently seen in the market.

A new first with the Pigmentinc[®] P30i series is the ability to print white inks to 100% polyester fabrics that are pre dyed dark colors. The white ink series also stretches to over 300% with the fabric and does not crack. A first for finished garment decoration to sportswear and team apparel! All colored polyester based fabrics including +/- 50/50 blends can now also be printed with CMYK with a White underbase.

Open more markets.

Great colors consistently, our Pigmentinc[®] series delivers all common color gamuts required for correct color matching. A unique formulation with latex derivatives provides stretch and a non cracking formulation that is consistent in color and reliability over extended batch manufacturing. Typically the Pigmentinc[®] p30i textile series are superior in color as they do not fade in curing as most common pigment textile inks. **It's a great ink.**



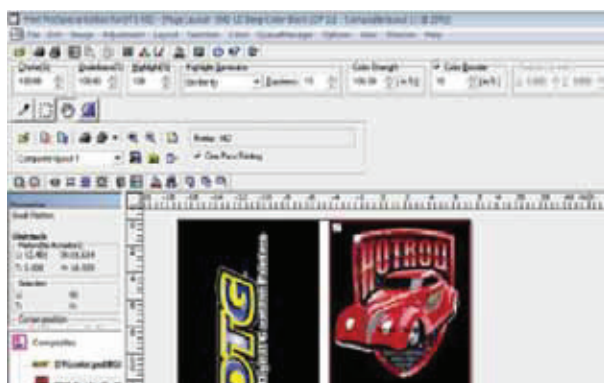
SOFTWARE

Choosing quality printer hardware is only half the equation, choosing a simple to use, color managed RIP software will make your prints come to life. DTG Print Pro is the original direct to garment software specifically designed to automate the creation of white ink underbase and high-lights, preset templates and print queue management. DTG Print Pro offers features essential for professional grade reproduction of images onto textiles all within an intuitive simple to use application.

It's template managed interface allows you to simply drag and drop a design in place, apply a preset color managed profile and output to print on all color textiles. The seamless step and repeat print queue ensures that production run prints are repeatable time and again.

DTG Print Pro's "Black Textile mode" recognises all black elements within a graphic file and will create the white layer as "shades and gradations" therefore eliminating the need to print black ink in the color layer. This significantly reduces ink consumption, increases print speeds and results in an incredibly soft hand feel to the printed garment.

DTG Print Pro is intelligent enough to allow you total control over ink droplet deposits on your garment. Simply put, you can print as little or as much ink as you like. Whether you are a fashion printer using subtle shades or you print promotional garments with colors that really "pop" be assured that DTG Print Pro will exceed your expectations.



DTG Print Pro Features

Color Management

- Print Pro is an ICC aware color managed application
- Uses embedded ICC profiles in the image files or assign default profile to RGB and CMYK images
- Integrated CMM
- Uses CIE L*A*B* as profile connection space
- Supports D50 and D65 Illuminant for profile connection space
- Device Profiling
- Support color profile generation for printing with white ink on colored textile
- Uses colored textile background as an ink

Device linearization

- Ink Limiting
- Custom GCR/UCR settings
- Intuitive grey balancing
- Monitor calibration
- Spectrophotometer support for profile creation (seperate plug in tool)

Halftoning

- Extended support for variable drop printing
- Sophisticated dithering for highly smooth image output

Image Handling

- Reads and writes BMP,PCX,GIF,PNG,JPG,TGA and multi channel file formats TIFF and Photoshop
- PSD file transparency support enabled
- TWAIN compatible scanner/camera support
- Memory management module for large image files
- Versatile image adjustment with color correction filters
- Image transformation, crop, rotate, flip etc
- Transparency generator tool

Print Queue manager

- Simultaneous RIP and print
- RIP once print many
- Job order changing, deleting, holding for production workflow enhancement

Port Manager

- Support File, USB TCP/IP, parallel and serial port
- Print through windows print queue both on local machine or network printer

Garment Specific

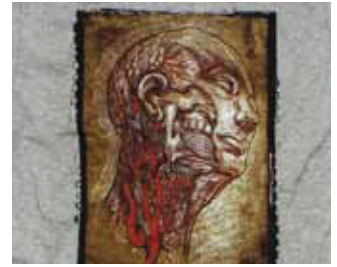
- Automatic patented white underbase generator
- Choke feature for white underbase
- White highlight generator

System Requirements

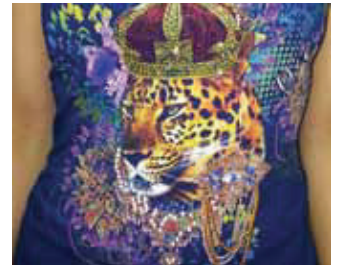
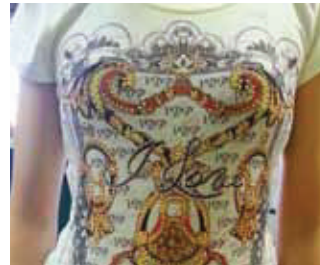
- Microsoft® Windows® XP or later
- Processor: requires a PC based on Quad Core (2.2 GHz) technology or higher
- RAM: 2GB DDR2 or more
- Hard Disk: Hard Drive with SATA interface and 100 GB free disk space
- Monitor: SVGA or better with resolution of 800 x 600 or better. 16 Bits or more color support recommended.
- Ports: 2 x USB recommended

APPLICATIONS

All Over Prints



Rhinestone and foil combinations



Fine Detail



Print on Black



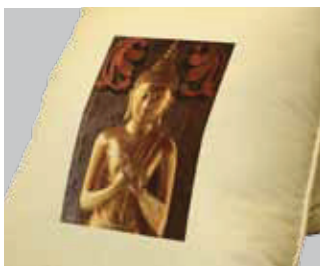
Jeans



Print on Seams



Soft Furnishing

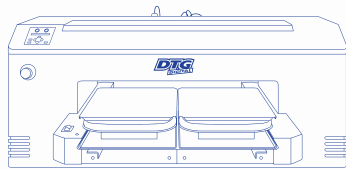


Kids Wear



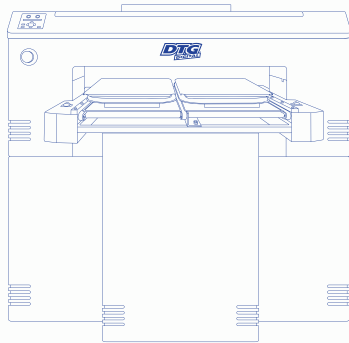
SPECIFICATIONS

M2 Specifications



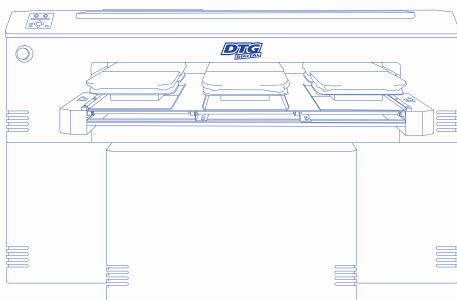
	Printhead	Piezo 180 nozzles per channel
	Color	8 (Dual CMYK or 4* White plus CMYK)
	Print Area	610mm x 450mm (24" x 17.7")
	Drive	Processor driven conveyor
	Inks	DTG inks - Piezo compatible pigments
	Ink Delivery	Bottle - pressurised CMYK, Bottle - pressurised re-circulation - white (WIMS)
	Operating System	Vista and XPRIP - DTG Rip Pro
	Electrical	AC 110-240V, 50-60Hz, 10A, Consumption - 55W or less, Standby - 5W, Off - 1W
	Physical Dimensions	980(W) x 550(H) x 1270(L)mm, 38.6"(W) x 21.7"(H) x 50"(L)
	Weight	96kg (212lb) (boxed weight will vary)

M4 Specifications



	Printhead	Piezo 180 nozzles per channel
	Color	8 (Dual CMYK or 4* White plus CMYK)
	Print Area	610mm x 1200mm (24" x 47") expandable to 2000mm deep
	Drive	Processor driven conveyor
	Inks	DTG inks - Piezo compatible pigments
	Ink Delivery	Bottle - pressurised CMYK, Bottle - pressurised re-circulation - white (WIMS)
	Operating System	Vista and XPRIP - DTG Rip Pro
	Electrical	AC 110-240V, 50-60Hz, 10A, Consumption - 55W or less, Standby - 5W, Off - 1W
	Physical Dimensions	980(W) x 1250(H) x 1270(L)mm, 38.6"(W) x 49"(H) x 50"(L)
	Weight	120kg (264lb) (boxed weight will vary)

M6 Specifications



	Printhead	Piezo 180 nozzles per channel
	Color	4 color Dual CMYK
	Print Area	1100mm x 980mm (43" x 38")
	Drive	Processor driven conveyor
	Inks	DTG inks - Piezo compatible pigments
	Ink Delivery	Bottle - pressurised CMYK, Bottle - pressurised re-circulation - white (WIMS)
	Operating System	Vista and XPRIP - DTG Rip Pro
	Electrical	AC 110-240V, 50-60Hz, 10A, Consumption - 55W or less, Standby - 5W, Off - 1W
	Physical Dimensions	1550(W) x 1250(H) x 1790(L)mm 61"(W) x 49"(H) x 70"(L)
	Weight	170kg (375lb) (boxed weight will vary)

*view speed and production rate demonstrations at our Video Channel @ www.dtgdigital.com



We're green, or try as hard as we can to be a responsible corporate company who takes our environment policies seriously. We endorse and partner with suppliers who also adopt similar principles.



Print trials must be undertaken prior to production – no warranties, express or implied, are given in connection with the accuracy or completeness of any of the information contained herein. DTG DIGITAL, FORWARD THINKING and PIGMENTINC are registered trade marks and or copyright of Impression Technology Pty Ltd, Australia. All copyright reserved.

www.dtgdigital.com

PRINTEX

Towards Innovation

E-mail: printexworld@gmail.com
Website: www.printex.com.pk



2020

HAPPY NEW YEAR

Defence Road, 0.5 Km off, Bhopatian Chowk, Mauza Bhopatian,
Rohinala Raiwind Road, Behind Zimbis Knitwear (Pvt) Ltd, Lahore.
Contact No. +92-42-35966300, +92-42-35966301. Fax No. +92-42-35966300